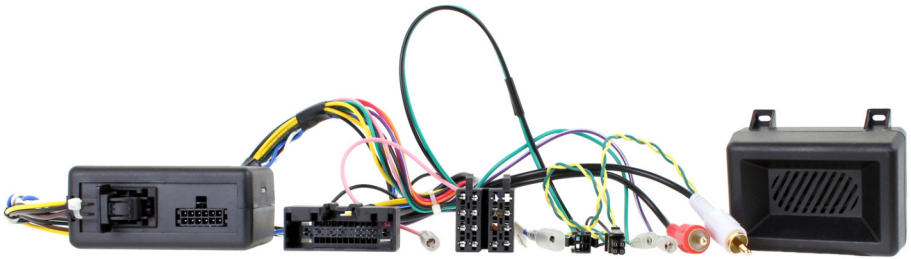


CHFO7C Ford Steering Wheel Control Interface



Vehicle Application

- Ford Ranger 2012>
- Ford B-Max 2012>
- Ford Kuga 2013>
- Ford Fiesta (JA8, US & Euro Models) 2012>
- Ford C-Max (DXA) 2010>
- Ford Focus (DYB) 2011>
- Ford Transit Custom (FCC, Not Euro 6) 2012 - 2016
- Ford Escape 2013>
- Ford Ecosport 2013>
- Ford Transit Connect 2013>
- Ford Taurus 2008 - 2012

Key Features

- Retains Steering Wheel Controls (if equipped)
 - Retains Time/Date Change
 - Retains Parking Sensor Audio
- Provides Speed Pulse, Park Brake, Reverse Gear, Antenna Remote & Illumination

aerpro.com

Designed and
Engineered
in the UK. 

The information provided in this document is subject to change without notice due to changes and/or improvements to the product/s.

ABOUT THIS PRODUCT

CHFO7C

CAN-Bus Steering Wheel Control Interface for Ford vehicles. Retains steering wheel controls, parking sensor audio and allows time/date change from the steering wheel.

WIRING COLOUR CODES

Purple	Right Rear Speaker +	Yellow	Permanent 12V
Purple/Black	Right Rear Speaker -	Black	Ground
Green	Left Rear Speaker +	Red	Ignition 12V
Green/Black	Left Rear Speaker -	Orange	Illumination
Grey	Right Front Speaker +	Green	Park Brake
Grey/Black	Right Front Speaker -	Pink	Speed Pulse
White	Left Front Speaker +	Purple/White	Reverse Gear
White/Black	Left Front Speaker -	Blue/White	Antenna Remote

PRIOR TO INSTALLATION

*Read the manual prior to installation. Technical knowledge is necessary for installation. The place of installation must be free of moisture and away from heat sources. Please ensure that the correct tools are using during the installation to avoid damage to the vehicle or product. **Aerpro can not be held responsible for the installation of this product.***

TECHNICAL SUPPORT

We want to provide a fast and suitable resolution to any problems encountered during installation of this product. To get in touch with our dedicated technical support team, please fill in a ticket at tdj.com.au/contact and provide as much information as possible.

FITTING GUIDE

1. Remove and disconnect the original head unit.
2. Connect the 12 way molex connector of the head unit patch lead (supplied separately) to the interface.
3. Connect the opposite end of head unit patch lead to the head unit steering wheel control input on the back of the aftermarket head unit.

NB: This may be a 3.5mm jack plug or a wire input depending upon the head unit brand being fitted. Please see the head unit installation manual for further information on where to connect.

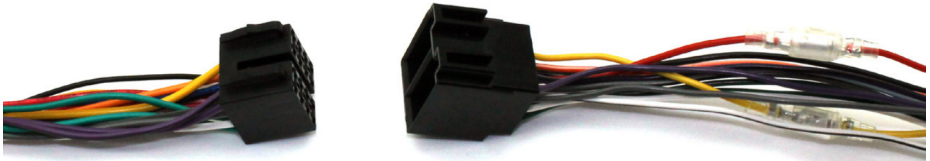
Important: This step must be completed before connecting power to the interface. Failure to do so may result in no steering wheel control function.



4. Connect the 14 way molex connector to the interface



5. Connect the male power/speaker ISO harness to the female power/speaker ISO harness from the aftermarket head unit. For aftermarket head units without an ISO connector, please refer to "Wiring Colour Codes" on Pg. 2.



FITTING GUIDE

6. Connect the female vehicle specific connectors on the harness to the male vehicle connector from the vehicle.

7. Connect the chime speaker box to the loom via the 4 pin connector and the red/white RCA connectors to the stereo Aux Input.

8. Remove the car display connector from the vehicle and plug into the interface (please remove the dust cover from the interface before making the connection).

9. Connect the display connector from the loom to the vehicle (the port previously occupied by the car display connector, removed in Step 8.)

Test head unit for correct operation.

STEERING WHEEL CONTROL FUNCTIONALITY

Original Button	Function
Volume +	Volume +
Volume -	Volume -
Track +	Track +
Track -	Track -
Speech	Mute

SETTING THE TIME/DATE

1. Press Speech to turn on the vehicle display
2. Press and hold Speech for two seconds to enable menu mode
3. Press Volume +/- to navigate to the clock setting menu option and press Speech to confirm selection
4. Adjust the time using Volume +/- and press Speech to confirm
5. Follow the same process to adjust the date
6. Once time and date have been set, press Speech to confirm

NB: The menu option will time out after 15-20 seconds of inactivity