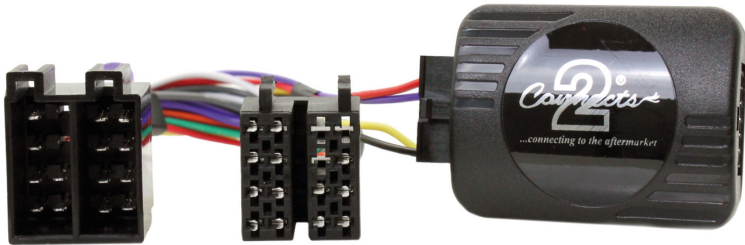


CHGM4C

Vauxhall/Opel, Chevrolet, Suzuki, Holden Steering Wheel Control Interface



Vehicle Application

Vauxhall Astra (G, T98)	1998 - 2004	Chevrolet Astra	1998 - 2011
Vauxhall Corsa (C)	2000 - 2004	Chevrolet Urban	1998 - 2011
Vauxhall Meriva	2003 - 2005	Chevrolet Viva	1998 - 2011
Vauxhall Omega (B2)	2000 - 2003	Chevrolet Corsa Classic	2002 - 2010
Vauxhall Vectra (B/C)	1998 - 2004	Chevrolet Celta	2002 - 2010
Vauxhall Zafira (A)	1999 - 2005	Chevrolet Vectra	2005 - 2011
Vauxhall Vivaro	2002 - 2006	Suzuki Fun	2002 - 2010
Vauxhall Astra Classic	2004 - 2009	Holden Barina	2000 - 2005
Vauxhall Agila (A)	2000 - 2004		

Key Features

- Retains Steering Wheel Controls

Designed and
Engineered
in the UK. 

ABOUT THIS PRODUCT

CHGM4C

Analogue Steering Wheel Control Interface for Vauxhall/Opel, Chevrolet, Suzuki and Holden vehicles with CAR200/300/400/CDR500/CCR600/CAR2003/2004/CCR2006/CDR2005 original stereo and 8 Way ISO connector

WIRING COLOUR CODES

Purple	Right Rear Speaker +	Yellow	Permanent 12V
Purple/Black	Right Rear Speaker -	Black	Ground
Green	Left Rear Speaker +	Red	Ignition 12V
Green/Black	Left Rear Speaker -		
Grey	Right Front Speaker +		
Grey/Black	Right Front Speaker -		
White	Left Front Speaker +		
White/Black	Left Front Speaker -		

PRIOR TO INSTALLATION

*Read the manual prior to installation. Technical knowledge is necessary for installation. The place of installation must be free of moisture and away from heat sources. Please ensure that the correct tools are used during the installation to avoid damage to the vehicle or product. **Aerpro can not be held responsible for the installation of this product.***

TECHNICAL SUPPORT

If you need assistance setting up or using your Aerpro product now or in the future, call Aerpro Support Australia
TEL: 03 – 8587 8898 FAX: 03 – 8587 8866 Mon-Fri 9am – 5pm AEST. If you would like to download a digital copy of this manual, or other Aerpro manuals/software, please visit the <http://aerpro.com> website.

FITTING GUIDE

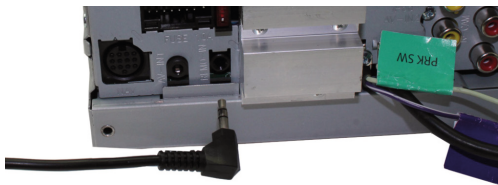
1. Remove and disconnect the original head unit.
2. Connect the 12 way molex connector of the head unit patch lead (supplied separately) to the interface.



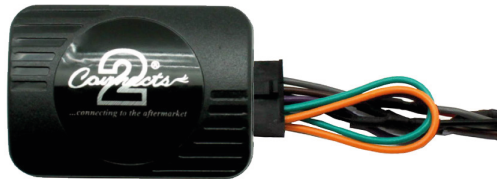
3. Connect the opposite end of head unit patch lead to the head unit steering wheel control input on the back of the aftermarket head unit.

NB: This may be a 3.5mm jack plug or a wire input depending upon the head unit brand being fitted. Please see the head unit installation manual for further information on where to connect.

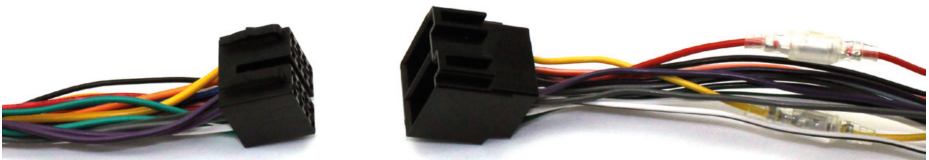
Important: This step must be completed before connecting power to the interface. Failure to do so may result in no steering wheel control function.



4. Connect the 14 way molex connector to the interface



5. Connect the male power/speaker ISO harness to the female power/speaker ISO harness from the aftermarket head unit. For aftermarket head units without an ISO connector, please refer to "Wiring Colour Codes" on Pg. 2.



FITTING GUIDE

6. Connect the female vehicle specific connectorson the harness to the male vehicle connector from the vehicle. Testhead unit for correct operation.

STEERINGWHEELCONTROL FUNCTIONALITY

Original Button	Function
+ Icon	Volume +
- Icon	Volume -
Right Arrow	Track +
Left Arrow	Track -
Source	Source

Example Steering Wheel Control Configuration

(Actual configuration may differ depending on vehicle model)

